



Electrolux
PROFESSIONAL

Stainless Steel Preparation 475x1098 mm Aluminum Corner Unit

ITEM # _____

MODEL # _____

NAME # _____

SIS # _____

AIA # _____



137074 (CLS1094)

Corner Shelving Set with
aluminium side uprights and
4 polyethylene louvered
shelves, 475x1098 mm

Short Form Specification

Item No. _____

For corner installation. 4-level shelving set with louvered sectional polyethylene shelves (depth=475mm). Aluminium (20 micron) side uprights (height=1700mm). Adjustable feet. To be combined with a linear shelving unit

Main Features

- Complete shelving system allows rapid and easy fixing of the shelves to the uprights.
- GN 1/1, GN 1/2 and GN 1/3 can be inserted into the frame.

Construction

- Uprights and shelf frames constructed entirely in anodized aluminium (20 micron).
- Shelves made by section of polyethylene tablets.
- Sectional polyethylene shelves are dishwasher safe.
- Corner shelving must be fixed to a linear shelf (either 375mm or 475mm in depth) with the included bar clamps and can be positioned anywhere along the length of the linear shelf.
- 4 tiers and 4 corner clamps.

Optional Accessories

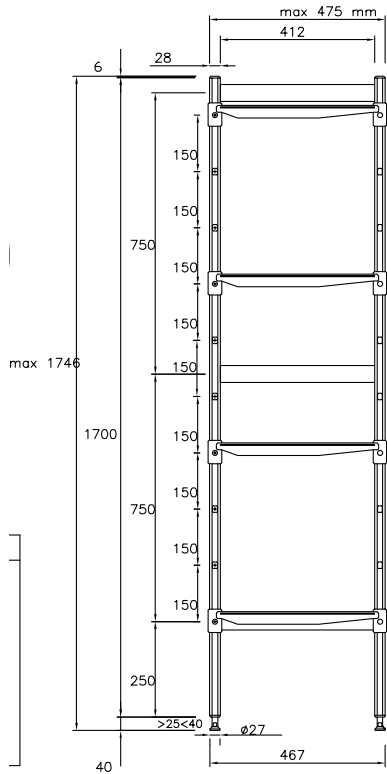
- Polyethylene shelf with aluminium frame, 475x1062mm PNC 850065
- Angle joint for shelves (depth=475mm) PNC 850071
- 2 swivelling wheels, 100mm PNC 850072
- 2 swivelling wheels with brakes, 100mm PNC 850073

APPROVAL: _____

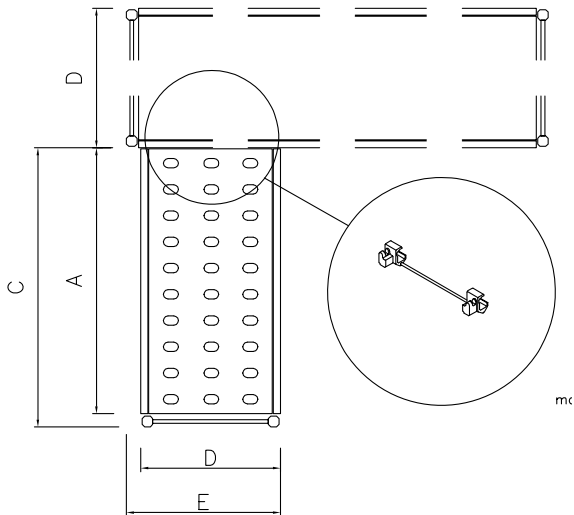


Experience the Excellence
www.electroluxprofessional.com

Front



Top



Other

	A mm	C mm	D mm	E mm
137070	708	744	475	509
137071	798	834	475	509
137072	886	922	475	509
137073	974	1010	475	509
137074	1062	1098	475	509
137075	1152	1188	475	509
137076	1240	1276	475	509
137077	1330	1366	475	509
137078	1505	1541	475	509

Key Information:
Uprights
137074 (CLS1094) 1

External dimensions, Width: 1098 mm

External dimensions, Depth: 475 mm

External dimensions, Height: 1700 mm

Max loading weight: 760 kg

Net weight: 20 kg